



May 25, 2015

Meade County School Board
1230 Douglas Street
Sturgis, SD 57785

Members of the Meade County School Board,

Meade County 4-H and Bullseye 4-H Archery presented to you at the May school board meeting and would like to thank you for your time and consideration towards our requests. Meade Co. 4-H would like to host a 3D archery shoot on August 15th behind the fair barn in conjunction with our county fair. We would also like to hold indoor archery practice/shoots in the Meade Co. Fair barn building during the summer months. This would be facilitated by 4-H certified archery instructors and 4-H volunteers to ensure safety and proper form.

We hope to keep the 4-H youth shooting during the off season in a safe environment with 4-H instructors and would appreciate your approval to do so in the Fair board building.

Thank you for your consideration,

Meade County 4-H & Bullseye 4-H Archery

SDSU EXTENSION • BERG AGRICULTURAL HALL 131, BOX 2207, SDSU • BROOKINGS, SD 57007

Mead County Outdoor 3-D Shoot and Indoor Targets

The Meade County 4-H Archery Shooting Sports would like to host an Outdoor 3-D Archery Shoot during the Meade County Fair. The land available has been mapped out and ready for your review. The targets will be set up with safety in mind using natural backstops and proper spacing. We will have volunteers walking the courses at all times to assist and ensure safety. We feel this will be a great way to attract more visitors to the fair and provide a safe and fun environment for those wanting to participate in and those wanting to observe the 3-D Archery Shoot.

Outdoor:

- Mapped out range
- Target spacing - 45 degree between target distances
- Back stops-
- Safety - Volunteers to walk the course during shoot
- Enrollment - Set up table, volunteers to sign up people
- Charge \$5 for 4-H members, \$10 for all others
- Awards - Volunteers to calculate scores and award ribbons
- Concessions - ??

We would also like you to consider allowing us to host Indoor Archery Shoots in the Expo Building. We would have the targets set up at 10, 15 and 20 yards for the different age groups. There would always be someone there to run the shooting line and ensure safety first. Archery is a growing sport and many are interested in participating. We have several experienced and highly dedicated volunteers willing to assist in growing our program.

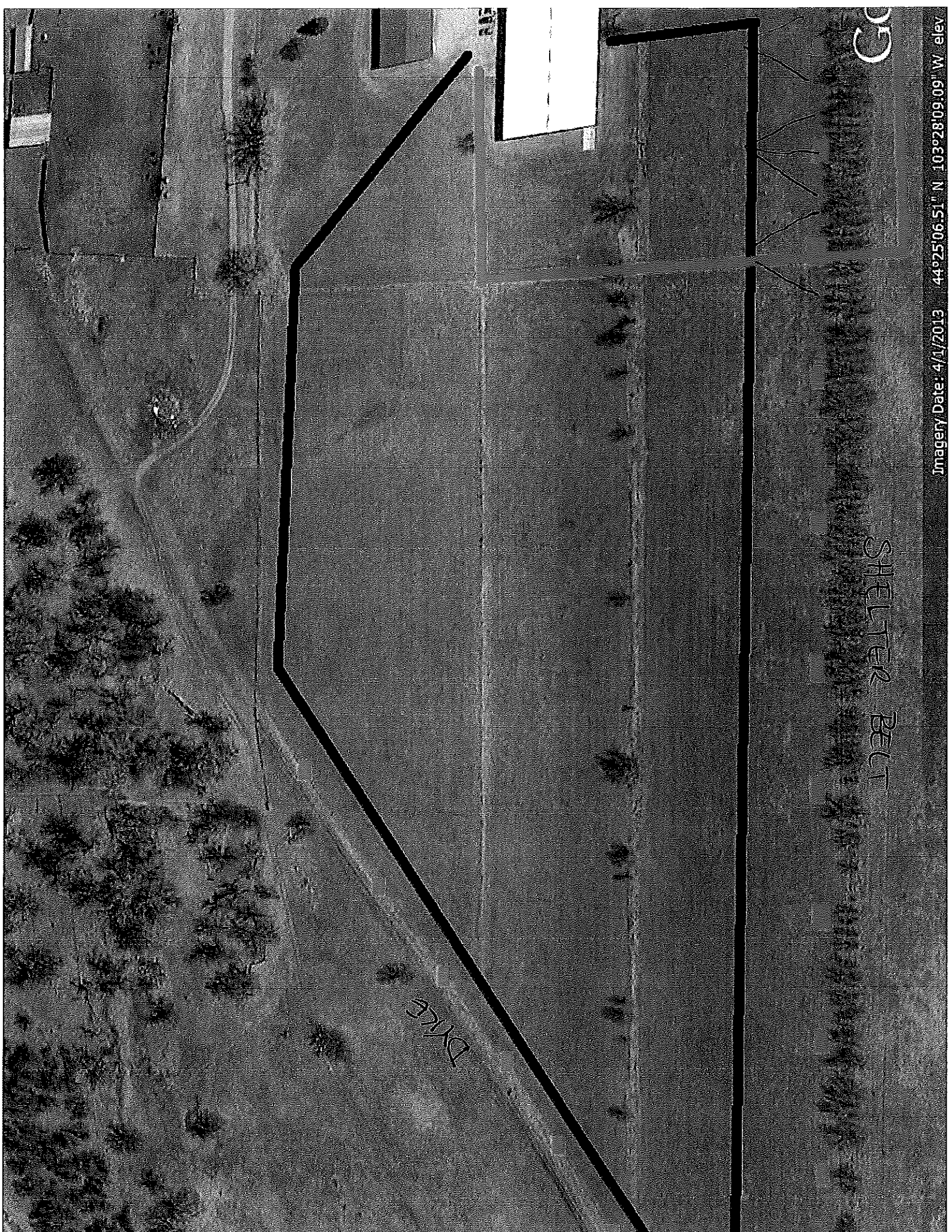
Indoor: Expo Building

- 12 Targets - Set up at 10, 15, 20 yards
- Safety - Volunteers to run shooting line
- Regular Targets and Fun Targets

As always, Our goals are Safety, Youth Development and Skill Development in that order.

Thank you for your consideration,

Meade County Shooting Sports



DRIVE

SHELTER BELT

GC